

ITV - Billy L

24.06.2014 - Ref 1

— A 7343 - 190

— A 7340 - 140

- - - A 7343 - 90

— A 7000 - 80

Superficie 25 m²

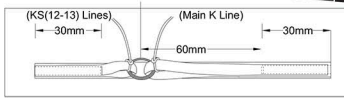
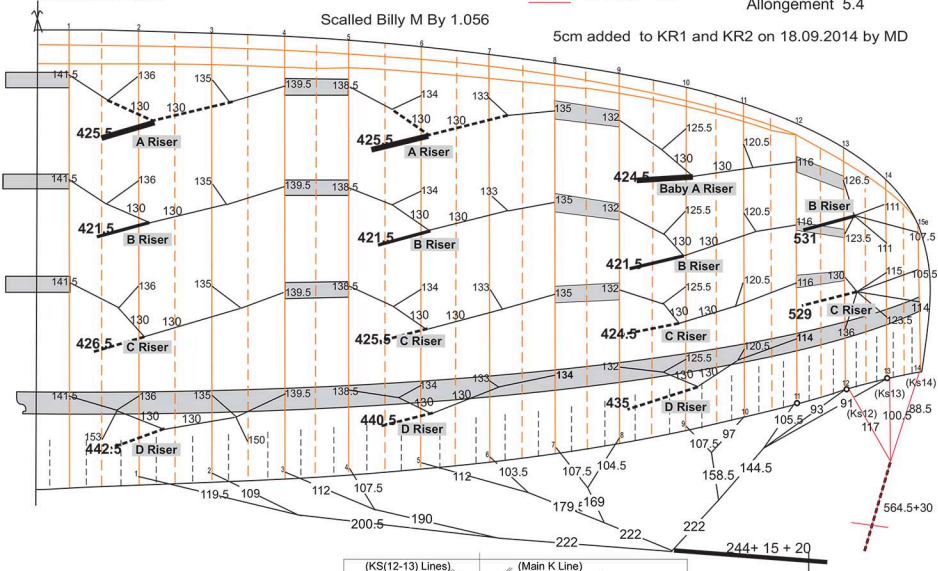
Env : 11.62 m

Nb cellules 58+ saumon

Allongement 5.4

Scaled Billy M By 1.056

5cm added to KR1 and KR2 on 18.09.2014 by MD



ITV - Billy M

14.06.2014 - Ref 1

— A 7343 - 190

— A 7340 - 140

--- A 7343 - 90

— A 7000 - 80

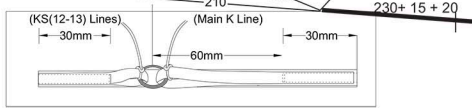
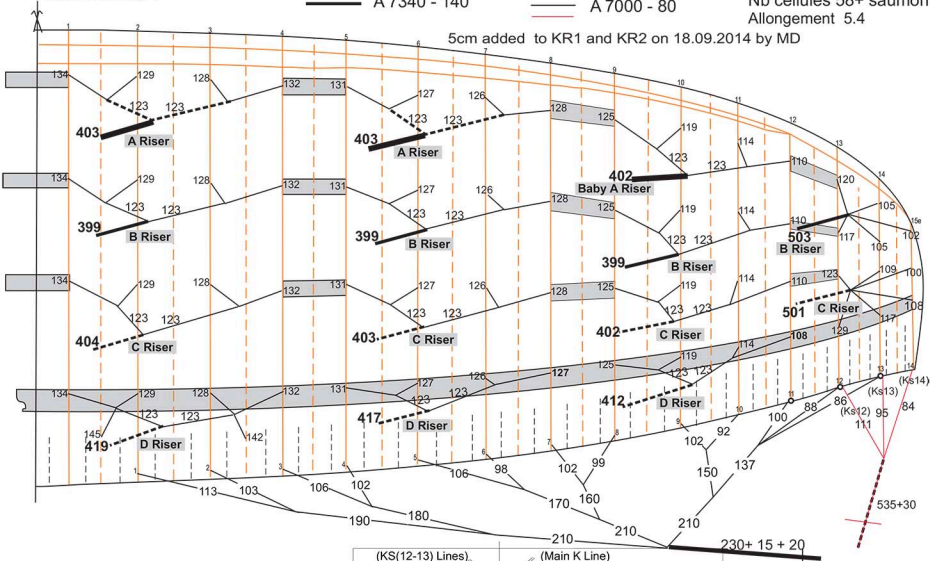
Superficie 25 m²

Env : 11.62 m

Nb cellules 58+ saumon

Allongement 5.4

5cm added to KR1 and KR2 on 18.09.2014 by MD



ITV - Billy S

23.06.2014 - Ref 1

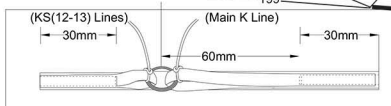
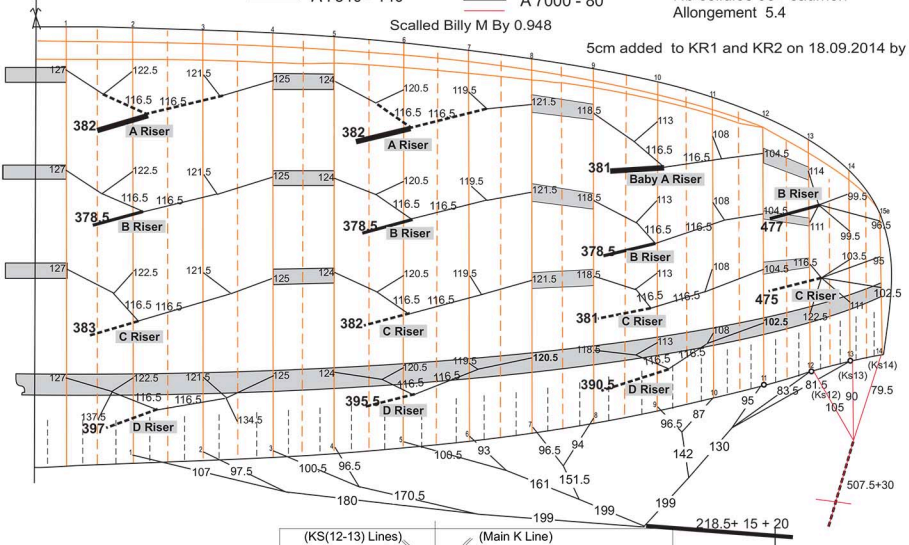
— A 7343 - 190
— A 7340 - 140

--- A 7343 - 90
— A 7000 - 80

Superficie 25 m²
Env : 11.62 m
Nb cellulés 58+ saumon
Allongement 5.4

Scalped Billy M By 0.948

5cm added to KR1 and KR2 on 18.09.2014 by MD



ITV - Billy XS

05.08.2014 - Ref 1

— A 7343 - 190

- - - A 7343 - 90

— A 7340 - 140

— A 7000 - 80

Superficie 25 m²

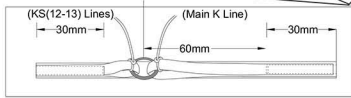
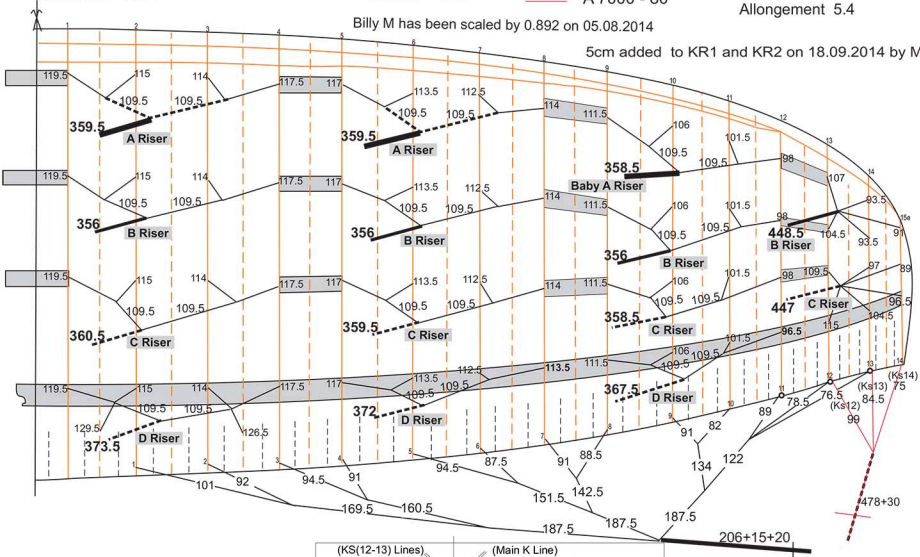
Env : 11.62 m

Nb cellules 58+ saumon

Allongement 5.4

Billy M has been scaled by 0.892 on 05.08.2014

5cm added to KR1 and KR2 on 18.09.2014 by MD



478+30